



OILLESS PRODUCT

UMIYA ENTERPRISE

A/24, Ambica Ind. Estate, G.D High School, Saijpur Bogha, Krishnanagr, Ahmedabad-380024
Email: info@jksoilless.com, www.jksoilless.com, Contact: (M)-09375571710, 07383110495



REPORTING SEGMENTS

We report the performance of our business within three operating segments: Oilless Product, Casting Product, and Precision Parts.

Oilless Product

Oilless Product designs, manufactures, throughout the construction, Plastic industries, Process industries and general engineering.

JKS business is leading manufacture and market of Oilless product as per customer requirement and our stand product such as wear plate, self lubricating bush with graphite impregnated, thrust washer, sphere lubricating bearing, self lubricating plumber block etc. Whether our customers operate in construction industries, process industries, plastic industries, engineering industries, general engineering, steel plant, mining, marine, food and beverage markets, we endeavor to deliver the highest quality products that improve our customers' business efficiency.

Brand Name include:*JKS Oilless*

Casting Product

Casting Product manufactures as per customer requirement.

JKS Supply various type graded ferrous and non ferrous sand casting and centrifugal casting with machined as per customer requirement.

JKS Casting are free from casting defect with material high quality and very good workman ship. Our manufacturing range is 0.1 kg to 500 kg single piece. We are manufacturing and supply bushes, split bearing bush, liners, kiln supporting bearing liner etc.

Precision Part

Precision product manufactures as per customer Quality, Delivery and service .

We were established in 2002. Since our inception, our strategy has always been to absorb the best technology and long machine-building experience to offer best precision product as per customer requirement in the industry, we have acquired reputed position one of the leading manufacturer, subcontractor in this competitive domain.

OUR APPROACH

JKS drives performance improvement every day providing the process, method, tools and technology for continues improvement,

JKS believes in lean enterprise, rapid growth and, standardization

LEAN ENTERPRISE

The primary goal of Lean Enterprise is to eliminate waste and improve velocity across all of the business processes. Though originally deployed in manufacturing, lean has shown to improve speed and reduce non value-added work. The goal of course, is providing value to customers. With safety, quality, delivery, cost and cash.

RAPID GROWTH PROCESS

The Rapid Growth Process provides the framework; tools and methodology that allow to *JKS* for identify new market opportunities and increase the speed of new product development, bringing innovative products to our customers more quickly.



JKS#500

MATERIAL: HIGH STRENGTH BRASS ALLOY WITH SOLID LUBRICANT.

- JKS#500 series are self lubricating bearing composed with high strength brass alloy made by advance casting technology with embedded solid lubricant.
- There are various type solid lubricant available conditions to use application.
- Various type grades available in JKS#500SP series as per application.
- Superior chemical resistance and corrosion resistance.
- This type bearing used in high load with wear resistance application.
- Standard and Customize product are available in various sizes.



JKS#500HP

MATERIAL: COPPER ALLOY WITH SOLID LUBRICANT.

- JKS#500HP series are self lubricating bearing composed with Copper alloy made by advance casting technology with embedded solid lubricant.
- This bearing used for highest load than JKS#500SP
- Superior wear resistance under high load application.
- Standard and customize product are available in various size



JKS#500AB

MATERIAL: ALLUMINIUM BRONZE WITH EMBEDDED SOLID LUBRICANT.

- JKS#500 AB series are self lubricating bearing composed with aluminum bronze alloy with embedded solid lubricant made by advance casting technology.
- This bearing used in sea water application.
- Super heat resistance and corrosion resistance
- Not brittle at low temperature and used in low temperature.
- Standard and Customize product are available in various size.



JKS#500B

MATERIAL: BRONZE WITH EMBEDDED WITH SOLID LUBRICANT.

- JKS#500B series are self lubricating bearing composed with bronze cast alloy and embedded with solid lubricant.
- There are two type materials available in this series as per general use and high temperature application. Use in high temperature.
- Superior chemical and corrosion resistance.
- Standard and Customize product are available in various sizes.



JKS#500F

MATERIAL: CAST IRON WITH SOLID LUBRICANT.

- JKS#500F self lubricating bearing use for low speed and middle load application.
- Economical lower than copper alloy.
- Superior wears resistance where application such as reciprocating motions, oscillation frequent start and stop.
- Standard and Customize product are available in various sizes



JKS#27

MATERIAL: ZINC BASE ALLOY

- Higher tensile strength.
- Double thermal conductivity.
- Low specific weight.
- Easy machinability.
- Four to five times longer life than PB.
- Not use in water application.
- Half weight compare than gun metal.
- Standard and Customize product are available in various sizes.



JKS#500
Insulating coating

MATERIAL: INNER MATERIAL JKSS500 SERIES AND POM.

- Outer material electric current penetration resistance 20KV/mm.
- This bearing used in electrical applications.
- Standard and customize products are available in various size.

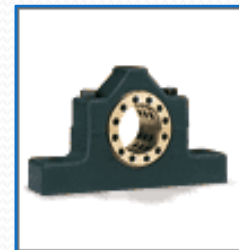
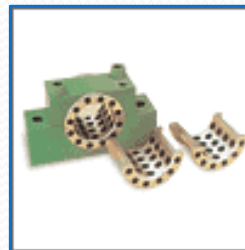


JKS#1000

MATERIAL: ZINC BASE ALLOY WITH EMBEDDED SOLID LUBRICANT.

- Not use in water application.
- Cost effective, reducing running cost.
- No oiling requires.
- Standard and customize products are available in various size.

JKS#500
Plumber Block

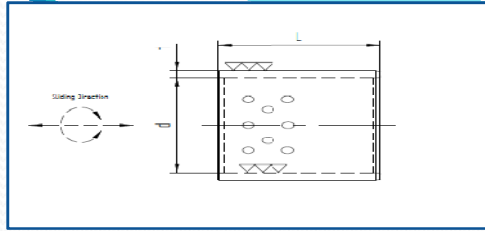


MATERIAL: INNER MATERIAL JKSS500 SERIES AND OUTER GRADED CAST IRON

STANDARD BUSH



JKS –STANDARD BUSH



All standard bushing have engraved "JKS" mark,

➤Standard bush are available in all category.

- JKS#500SP1
- JKS#500SP4
- JKS#500SP5
- JKS#500HP
- JKS#500B
- JKS#500AB
- JKS#27
- JKS#1000
- JKS#500F

➤Identification:

- ID:-d
- Thickness: t
- Length:L

➤Tolerance:

- Inner Diameter: F7
- Outer Diameter:m6
- Total length:-0.1 to -0.3

➤Radius and chamfer as per our standard.

➤Standard and customize product are also available.

➤All dimension are in MM

➤Embedded solid lubricant available in a graphite , PTFE and as per application.

➤ Ordering Detail:

Specify part No ID ,Thickness and length

(e.g.)
JKS#500 SP1 ,ID is 75 mm ,thickness 10 mm and length 60 mm

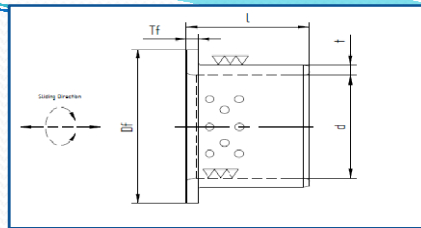
Part code:JKS500SP1
Part no:751060

ID	Thickness	Length						
16	3	30						
16	7.5	20						
20	4	50						
25	4	12	15	20	25	30	35	40
25	5	15	35	45	50			
28	5	20	25	30	40			
30	4	15	20	25	30	40	50	60
30	5	15	20	30	40	50	60	70
32	5	20	30	40	50	60		
35	4.5	25	35	40	50	60		
35	7.5	50						
38	5	25	30	35	40	50		
39	6	45						
40	5	15	20	25	35	45	50	
40	7.5	20	25	30	40	50	60	
45	5	15	25	30	35	40	50	
50	5	20	35	45	55	65	80	
50	6	30	40	50	60	70	90	
50	7.5	25	50	60	70	80	100	
58	5	58	116					
60	7.5	40	50	60	70	80	90	
65	7.5	30	55	65	75	85	100	
66	5	66						
70	7.5	50	60	70	80	100		
70	10	50	60	70	80	100		
75	7.5	50	60	70	80	100		
75	10	60	70	80	100			
80	10	40	50	60	70	80	90	
85	7.5	50	60	80	100			
90	7.5	80	95	120				
90	10	50	60	80	90	100	120	
100	10	50	60	80	90	100	120	
110	10	50	60	80	100	120		
120	10	70	80	90	100	150		
130	10	80	100	150				
140	10	80	100	150				
150	10	80	100	150				
160	10	80	100	150				
170	10	100	150					
180	10	100	150					
190	10	100	150					
190	20	110						
200	15	150	200					
250	14	550						
250	25	64						
290	20	135						

FLANGED BUSH



JKSF - FLANGED BUSH



All Flanged bushing have engraved "JKS" mark,

➤ Flanged bush available are in all category.

- JKS#500SP1
- JKS#500SP4
- JKS#500SP5
- JKS#500HP
- JKS#500B
- JKS#500AB
- JKS#27
- JKS#1000
- JKS#500F

➤ **Identification:**

- ID:-d
- Thickness: t
- Flanged od: Df
- Flanged thickness: Tf
- Length:L

➤ **Tolerance:**

- Inner Diameter: E7
- Flange thickness:0 to-0.1
- Flange outer diametre:0 to-0.3
- Outer Diametre:r6
- Total length:-0.1 to -0.3

- Radius and chamfer as per our standard.
- Standard and customize product are also available.

- All dimension are in MM.
- Embedded solid lubricant available in a graphite , PTFE and as per application.

➤ **Ordering Detail:**

Specify part No ID ,Thickness ,flanged od ,flanged thickness and length

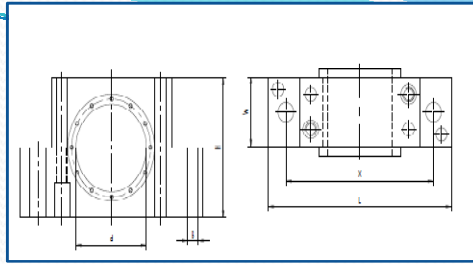
(e.g.)
JKS#500 SP5 ,ID is 75 mm ,thickness 10 mm ,flanged od 110 flanged thickness 7.5 and length 60 mm

Part code:JKSF500SP5
Part no:75101107@560

7.5 mm means:7@5

ID	Thickness	Flange OD	Flange thickness	Length			
24	7	80	7	29			
25	5	45	5	20			
25	7.5	62	8	104			
25	5	45	5	15	25	35	40
30	5	50	5	20	30	40	50
35	5	60	5	25	35	45	55
38	6	80	6	49			
40	5	65	5	25	30	40	50
45	5	70	5	30	35	40	50
50	5	75	5	40	50	60	
55	5	82	2.5	55			
55	5	80	5	40	60	70	
60	7.5	90	7.5	40	50	60	
64	5	80	6	60			
65	7.5	95	7.5	50	70		
70	7.5	105	7.5	60			
75	7.5	110	7.5	60	80	100	
80	10	120	10	60	80	100	
90	10	130	10	60	80		
100	10	150	10	80	100		
120	10	170	10	80	100		
130	10	180	10	80	100		
140	10	190	10	80	100		
150	10	200	10	100	120		
160	10	210	10	100	120		

JKBOT –PLUMBER BLOCK



➤ Inner bearing bush are available in all category.

JKS#500SP1,JKS#500SP4,JKS#500HP,JKS#500B, JKS#500AB,JKS#500F. All Plumber block have engraved “JKS” mark,

➤ All dimension are in mm.

➤ **Identification:**

ID:-d,Length:L,Width:W,Hole Size:B,Hole distance: X

➤ Plumber Block specify as per our standards.

➤ **Ordering Detail:**

Specify part No Inner ID ,Width., total length (e.g.)

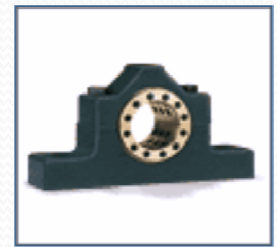
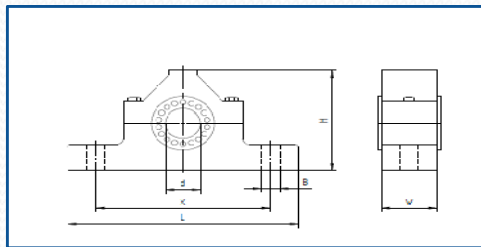
JKS#500B ,ID is 50 mm ,Width 60 mm and total length 155 mm

Part code:JKBOT500B

Part no:5060155

Inner Dia.	Length	Width	Hole No x size	Hole Distance
30	110	40	2 x 9	85
40	130	50	2 x 11	105
50	155	60	2 x14	125

JKLB –PLUMBER BLOCK



➤ Inner bearing bush available in all category.

JKS#500SP1,JKS#500SP4,JKS#500HP,JKS#500B, JKS#500AB, JKS#500F.

➤ All dimension are in mm.

➤ **Identification:**

ID:-d

Total length:L

Width:W

Hole Size: B

Hole Distance: X

Height:H

➤ Plumber block as our specify standards.

➤ **Ordering Detail:**

Specify part No Inner ID ,Width., total length (e.g.)

JKS#500B ,ID is 50 mm ,Width 50 mm and total length 155 mm

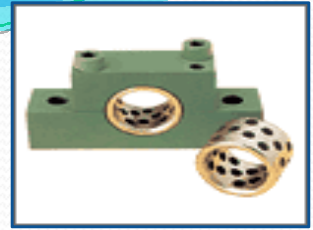
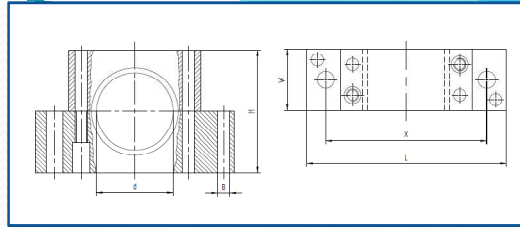
Part code:JKLB500B

Part no:5050155

All Plumber block have engraved “JKS” mark,

Inner Dia.	Length	Width	Hole No x size	Hole Distance
50	225	45	2 XM16	160
55	225	50	2 X M16	175
60	270	50	2 X M16	175
65	270	55	2 X M20	210
70	290	55	2 X M20	210
80	330	60	2 XM20	230
90	290	70	2 XM24	265
100	355	80	2 XM24	290
110	355	90	2 X M24	290
120	420	90	2 x M30	340
125	420	100	2 x M30	340
130	420	100	2 x M30	340
140	440	120	2 x M30	360
150	440	120	2 x M30	360

JKBO –PLUMBER BLOCK



➤ Inner bearing bush are available in all category.

JKS#500SP1,JKS#500SP4,JKS#500HP,JKS#500B,JKS#500AB, JKS#500F.

➤ All dimension are in mm.

➤ **Identification:**

ID:-d,Total length:L,Width:W,Hole Size: B,
Hole Distance: X,Height:H

➤ Plumber block are available as per our standard.

Ordering Detail:

Specify part No Inner ID ,Width., total length
(e.g.)

JKS#500B ,ID is 50 mm ,Width 50 mm and total length
155 mm

Part code:JKBO500B

Part no:5050155

All plumber block have engraved “JKS” mark,

Inner Dia.	Total Length	Width	Hole No x size	Hole Distance	Height
30	110	30	2 x 9	85	60
40	130	40	2 x11	105	70
50	155	50	2 x 14	125	100

Injection moulding



This type machine oscillating or reciprocating motions or stop and start frequently, where lubricating film is seldom produced.

- JKS#500SP
- JKS#500SP5
- JKS#500HP
- JKS#27
- JKS#1000

Construction



This type machine use in severe condition so lubricant is not proper effective.

- JKS#500SP
- JKS#500SP5
- JKS#500HP
- JKS#500B
- JKS#500AB
- JKS#27
- JKS#1000

Dam Project



Lubricating can not possible for reason of environmental protection

- JKS#500SP
- JKS#500SP5
- JKS#500AB

Tower link



Frequently lubricating can not possible this type project

- JKS#500SP
- JKS#500AB

Steel Plant



Lubricating can not effective properly in hot or cold facility.

- JKS#500SP
- JKS#500AB
- JKS#500SP5
- JKS#500HP
- JKS#500B
- JKS#500F